

Polk County Controlled Bow-Hunt 2024-2025 Deer Report



- Executive Summary
- Post Season Reports
- Polk County Deer Surveys
- Bow-Hunt Administrators
- Advisory Organizations
- Deer Harvest Statistics
- Appendix

Compiled by the
Polk County Deer Task Force

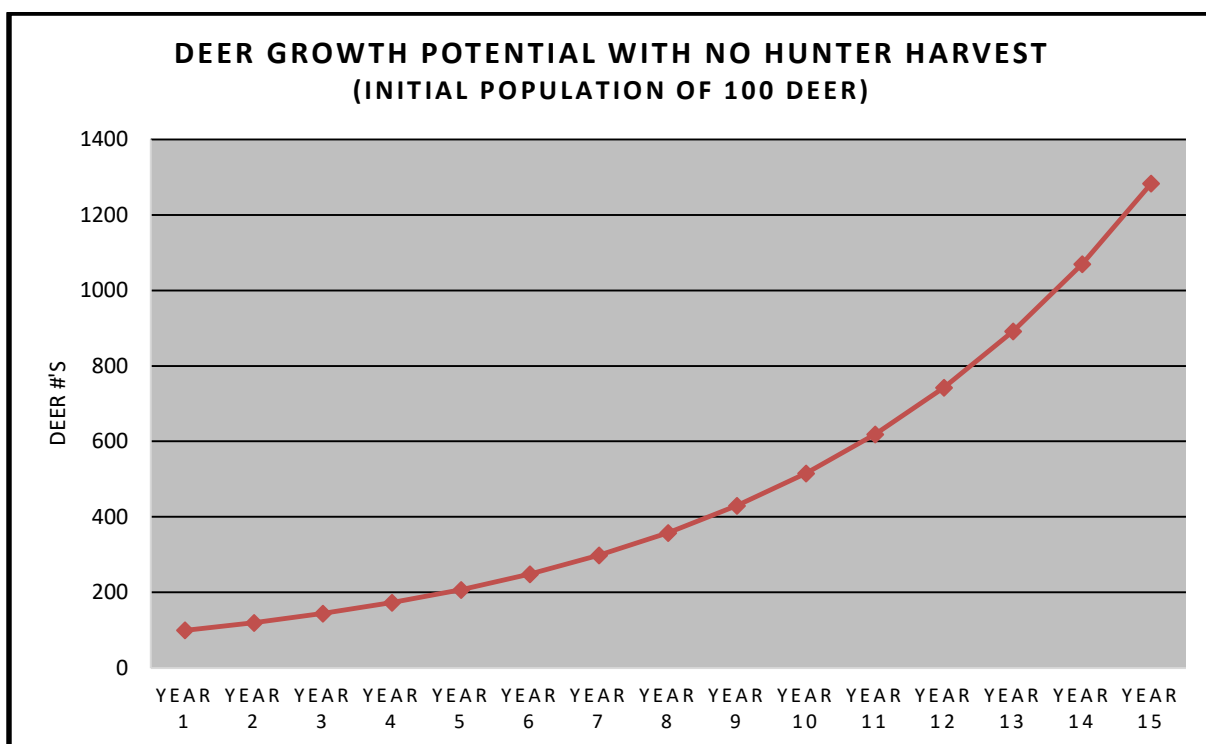
The Polk County Deer Task Force believes that the White-tailed deer is a valuable part of our natural heritage. We support the perpetuation of the deer population in Polk County at ecologically acceptable levels.

-1997 Position Statement of the Polk County Deer Task Force



Executive Summary

Based on harvest records and agency observations, it is recommended that the Polk County Controlled Bow-Hunt should be continued for the 2025-2026 season throughout the Polk County Deer Management Zone. Agencies are encouraged to continue or expand hunting opportunities in their areas of control. Deer population numbers may have been reduced to target goals in some areas but remain higher in neighborhood habitats where hunting may not be a control option. Agencies may need to remember that an uncontrolled deer population can double every three to four years. Continued hunting pressure within the Deer Management Zone has produced remarkable results in managing deer populations across the area.



The graph above depicts potential population growth of a deer herd where no hunting is allowed. The growth considers average population structure based on probable gender and age distribution. Considerations are also given to related fecundity rates. Distribution of these animals over time and as densities increase can vary. A relatively confined population will probably contribute to an increase in deer numbers over an increasingly larger geographical area over time.

Post Season Reports

Hunting Season

This year the IDNR allowed participating entities to use September 21, 2024, through January 19, 2025, for the Polk County Deer Management Zone bow-hunting season. Agencies could choose to use these dates for their season, or tailor their hunt to suit individual needs (as long as the dates were within the allowable season above). The Natural Resource Commission has approved hunt dates for the 2025-2026 season as September 20, 2025, through January 25, 2026. 40 deer were harvested before October 1, 2024 (normal start of bow season) and 26 deer were harvested after January 10, 2025 (normal close of bow season). This extra season length accounted for 23% of the harvest (66 of 290).

Deer Harvest

Agencies reported that 266 antlerless deer were harvested during the 2024-2025 bow-hunt, which is an 2% increase from 261 in the 2023-2024 season.

A total of *284 antlerless deer harvested in the Polk County Deer Management Zone 24 incentive bucks were harvested during the 2023-2024 bow-hunt.

A total of *312 deer were harvested during the 2023-2024 season.

* Count includes Camp Dodge (shotgun and muzzle any sex-tags)

Several hunters continue to have trouble entering data in the online system, entering data that does not align with the ELSI data, and there were 21 instances where the deer were not entered at all in clear violation of entity regulations. Some of those individuals will be removed from their hunts and that information shared with other entities. Proper reporting is a requirement to participate in this program.

Proficiency Testing

Archery Field and Sports and US Army Corp of Engineers administered proficiency testing to hunt participants. 163 proficiency tests were taken and only 8 failed. 143 passed with a compound bow, 4 with a re-curve bow, and 16 with a crossbow.

Hunter Participation

170 (up from 156) total hunters purchased zone 48 tags

106 (up from 97) hunters tagged at least 1 deer

Total deer tagged	Number of hunters
1	40
2	16
3	15
4	13
5	13
6	7
7	2

The 35 hunters (33% of hunters tagging a deer) tagging 4 or more accounted for 60% of the harvest (173 of 290). 64 (38%) hunters did not tag a deer. It is suggested entities with limitations on the number of hunters allowed in their program consider removing hunters who are not harvesting deer.

Safety Record

No injuries were reported by hunters, neighbors, or park visitors.

Licenses Sold

The Polk County Deer Management Zone previously was divided into two zones. Zone 48 for inside city limits and Zone 61 for a perimeter immediately outside of city limits. Due to low usage and confusion amongst hunters and license vendors, Zone 61 for outside of city limits was removed and hunters in those areas were encouraged to use general licenses, Polk County antlerless tags and statewide any-sex tags, in those areas instead.

1000 licenses were available for zone 48 which includes all the cities, Polk County Conservation areas and U.S. Army Corps of Engineers areas.

Hunters purchased 533 antlerless licenses in zone for use in the Polk County Deer Management Zone.

Changes

Zone 61 tags were eliminated due to low usage and added confusion.

2024-2025 Polk County Urban Deer Surveys

Andy Kellner and Tyler M. Harms
Iowa DNR

Helicopter surveys were flown on February 20th and 21st using a Hughes OH-6 helicopter operated by Bachman Aero. Observers were Robert Stober and Catherine Cummings. Snow amounts persisted from winter weather February 12-13th resulting in approximately 6 inches of snow. Snow conditions for the survey were fair with >6" of snow at the beginning but snow conditions degraded through the survey. Bright conditions made viewing difficult in some cases with shadow interference. Light winds made for good flying conditions throughout the survey time. Many deer beds were present which made observations more difficult. Overall, conditions were fair.



The number of deer sighted for each area is reported in Table 6. The number of deer recorded should be viewed as a minimum count. Each area listed was divided up into discrete units and circled or flown systematically. Where necessary the helicopter was brought around to count areas more thoroughly. Deer activity largely varied with the passing of the helicopter with some deer remaining still and others vacating the area.

Overall, the numbers are significantly lower than observations in 2021. The number of deer counted was up by varying degrees or the same in nine of the urban areas surveyed. Of particular interest, along 4 Mile Creek and around Pleasant Hill the deer numbers were all higher. However, 11 areas saw significant decreases in areas of Des Moines including the Des Moines River corridor, Water Works Park, Brown's and Walnut Woods, as well as areas around Easter Lake

Between the renewed hunting efforts in Water Works Park as well as recent Hemorrhagic Disease (HD) activity is impacting deer numbers in specific locations. The nature of these localized efforts may explain differences in observed deer numbers in different parts of the metropolitan area. This may have been enough to shift deer populations around and show an overall decrease in observed deer numbers.

Iowa DNR Biometrician, Tyler Harms, produced the tables and figures comparing bow hunter survey data from the statewide survey for the Central Region (Webster, Hamilton, Hardin, Boone, Story, Marshall, Polk, and Jasper Counties) to the Polk-Dallas Urban Archery bow hunter survey data. Some trends are becoming evident as we continue to collect these data within the DMZ.

For the 2024-25 hunting season, 73 bow hunter surveys for the Polk DMZ were returned. This number continues to increase: last season there were 69 surveys returned and 63 from the 2022-2023 season. Continued collection of these data annually will yield more reliable trends for hunt administrators.

Figure 1 shows a trend in the total hours hunted in the DMZ and Figure 3 shows a trend in the number of deer observed per 1,000 hours hunted in the DMZ. These figures combined provide insight into deer abundance as well as hunter effort. Overall, the trend lines should be observed as year-to-year movements in these observations as opposed to raw numbers. Additionally, Figure 5 illustrates the similar trends in the ratio of deer observations that are antlerless deer for both the DMZ and the Central Region despite a dip from 2023 to 2024. These trends are fairly consistent between the DMZ and the Central Region (Figure 4) despite a dip in 2020 in the DMZ.

That being said, the DMZ trend lines are definitely among the lower values reported for the Central Region. While this year reported numbers for the Central Region may have been influenced by HD, either

by dissuading hunter effort or by impact to deer numbers, the overall trend will likely continue. This speaks to the overall lower number of deer observed per hunting effort. This could be an indicator of the success of the urban bow hunting program at reducing population levels within the metro since its inception. In addition, the somewhat stable trend in deer observations from the bow hunter survey matches that of reported harvest in the DMZ. The correlation of these two trends is a strong indicator of a stable deer population in the DMZ.

Figure 2 shows the number of hours spent hunting broken down by the week of each month of the season. This provides useful insights into the use of additional hunting opportunities available to the DMZ compared to the rest of the state before and after the statewide hunting season: September and late January. Additionally, this graph demonstrates the high use of the Polk DMZ during the shotgun seasons when archery hunting is not allowed in the rest of the state (December 7th – December 22nd) although the lack of effort the first week of December could be due to weather or other factors.

Continued hunting will help maintain decreased deer densities across the Des Moines Metro. Areas without hunting will see increases in deer numbers going forward. Populations can rebound from HD related mortality events within a few years. Current numbers are falling within many of the management goals for deer densities and hunting will be an effective tool for maintaining those densities. Overall the deer densities are considerably lower than would be expected if the controlled hunts had not been initiated in 1998.

Bow-Hunt Administrators

- City of Des Moines: Paul Strome 515-248-6349
- City of Johnston: Kari Allen 515-710-1519
- Polk County Conservation: Charlie Finch 515-250-1031
- US Army Corps of Engineers (Saylorville Lake): Coty Thompson 515-276-4656 x6514
- City of Urbandale: Collin Ten Haken 515-278-3910
- Walnut Woods State Park (IDNR): Josh Shipman 515-285-4502
- City of West Des Moines: Marco Alvarez 515-222-3452
- City of Clive: Jeff Theilen 515-238-0648 / Joel Pasco 515-210-7581
- City of Pleasant Hill: Heath Ellis 515-208-5212
- City of Polk City: Matt Aswegan 515-689-1388
- Des Moines Water Works and Maffitt Lake: Jessica Barnett 515-283-8702
- Windsor Heights: Chad Norris 515-277-4453

Advisory Organizations

The following organizations serve in an advisory capacity to the Polk County Deer Task Force (in addition to the organizations listed above).

- Iowa Dept. of Natural Resources: Andy Kellner 515-975-8318
- Archery Field and Sports
- IDNR Law Enforcement
- Iowa Bow Hunters Assoc. (IBA)
- National Field Archery Association
- Polk County Conservation Board
- Westwood Neighborhood Association.

Deer Harvest 2023 - 2024

POLK-DALLAS URBAN ZONE 48

A. Polk County Conservation (PCC) Public Areas				
	Incentive Buck	Shed Buck	Button Buck	Doe
Jester Park	1	2	2	10
Sycamore Trail (includes Area C in Johnston)	0	0	0	4
Easter Lake	1	0	0	0
Brown's Woods	2	0	3	9
Thomas Mitchell Park	0	0	0	0
Mally's Weh-Weh-Neh-Kee Park	0	0	1	4
Four Mile Greenbelt	1	0	4	5
Yellow Banks Park	0	0	0	9
Gay Lea Wilson East Trail	0	0	0	0
Polk County Conservation (PCC)	Harvest Total	5	2	10
			10	41

B. City of Clive				
City of Clive Public Areas	Incentive Buck	Shed Buck	Button Buck	Doe
West of I-80	0	0	0	3
Greenbelt Park: East of NW 114th	1	0	2	2
Sub-total	1	0	2	5
City of Clive Private Property				
None at present date	0	0	0	0
Sub-total	0	0	0	0
City of Clive	Harvest Total	1	0	2
			2	5

C. City of Des Moines				
City of Des Moines Public Areas	Incentive Buck	Shed Buck	Button Buck	Doe
Cases Lake: Hartford Ave	0	0	3	11
Crocker Woods: Prospect Rd. & Hickman Rd.	0	0	0	3
Ewing Park	1	0	0	5
Laurel Hill Woods	0	0	0	0
MacRae Park	0	0	0	2
Pioneer Park	1	1	2	3
Ashworth Park	1	1	3	4
Sub-total	3	2	8	28
City of Des Moines Private Property				
SW / Airport Area (South of Waterworks Park, West of Fleur to limits)	0	0	0	0
SE / Easter Lake and Ewing Parks Area (SE 14th east, South of DM River to Limit)	0	0	0	3
South of Grand Area (West of Terrace Hill to 63rd, South of University to Waterworks)	1	2	2	10
MacRae Park Area	0	0	1	1
Prospect / Beaverdale Park Area	1	0	0	12
East Area (East and Northeast area of city)	0	0	0	0
Sub-total	2	2	3	26
City of Des Moines	Harvest Total	5	4	11
		54		

D. Des Moines Water Works				
	Incentive Buck	Shed Buck	Button Buck	Doe
2201 George Flagg Parkway	3	0	1	25
Maffitt Reservoir	2	0	1	0
Des Moines Water Works	Harvest Total	5	0	2
				25

E. City of Johnston				
City of Johnston Public Areas	Incentive Buck	Shed Buck	Button Buck	Doe
Area A: Army Corps of Engineers (See USACE Totals)				
Area C: Sycamore Trail (See PCC totals)				
Area E: City of Johnston - 156 Acres	2	0	0	8
Sub-total	2	0	0	8
City of Johnston Private Property				
Private Property	0	0	0	3
Sub-total	0	0	0	3
City of Johnston	Harvest Total	2	0	0
				11

F. City of Pleasant Hill				
	Incentive Buck	Shed Buck	Button Buck	Doe
Polk County Property (See Polk County Totals)				
City Parks	1	0	5	7
Private Property	1	0	0	7
City of Pleasant Hill	2	0	5	14

G. City of Urbandale				
	Incentive Buck	Shed Buck	Button Buck	Doe
City of Urbandale Public Areas				
City Parks	1	0	1	3
Sub-total	1	0	1	3
City of Urbandale Private Property				
Living History Farms (LHF) (West of I-35)	1	0	0	7
Other Private Property	1	0	2	21
Sub-total	2	0	2	28
City of Urbandale	3	0	3	31

H. City of West Des Moines				
	Incentive Buck	Shed Buck	Button Buck	Doe
City of West Des Moines Public Areas				
Southwoods Park	0	0	0	3
Racoon River Park	0	0	0	4
Racoon River Greenway	0	0	0	0
Sub-total	0	0	0	7
City of West Des Moines Private Property				
Private Property	0	0	1	0
Sub-total	0	0	1	0
City of West Des Moines	0	0	1	7

I. USACE: (Corps of Engineers)				
	Incentive Buck	Shed Buck	Button Buck	Doe
Saylorville	1	0	0	17
Polk City Refuge (No Buck Incentive Issued for this area)	0	0	0	0
USACE	1	0	0	17

Antlerless Deer Harvested	Total	284
----------------------------------	--------------	------------

* Count including Camp Dodge (shotgun/muzzle)

Incentive Bucks	Total	24
Bucks: Camp Dodge** and ELSI zone 61	Total	4

**Normal seasons (shotgun/bow) and any-sex tags allowed

Total Deer Harvested **312**

Lifetime (1998 to present) harvest numbers

	Antlerless	Incentive Bucks	Total Deer
Zone 48	8226	501	8727
Zone 61	153	5	158
Camp Dodge	840	530	1370
Grand Total	9219	1036	10255

Appendix

Polk DMZ Bow Hunter Survey Summary 2024

Tyler M. Harms and Andy Kellner

April 1, 2025

This document provides a summary of observations from the Bow Hunter Observation Survey conducted within the Polk County Deer Management Zone. The survey was distributed to hunters throughout the DMZ. Where possible, data are summarized by sites described by hunt managers.

Response summary

Total number of hunters who responded in DMZ

[1] 73

Table 1. Total number of hunters who responded by site

Location	# of hunters
Ashworth Park (DSM)	4
Case Lake/Soccer (DSM)	1
Clive	7
Des Moines Private East Area	2
Des Moines Private MacRae Area	1
Des Moines Private Prospect Beaverdale Area	3
Des Moines Private South of Grand	8
Des Moines Private South West	1
Des Moines Private Southeast Area	1
Ewing Park (DSM)	4
MacRae Park (DSM)	2
Maffitt Reservoir	4
Pleasant Hill Private	1
Pleasant Hill Public	2
Polk County Brown's Woods	2
Polk County Jester Park	3
Polk County Mally's Park	2
Polk County Sycamore Bike Trail	2
Polk County Yellow Banks Park	2
Urbandale Living History Farms	2
Urbandale Private	12

Location	# of hunters
Urbandale Public	6
USACE Saylorville Lake East	8
USACE Saylorville Lake South	7
USACE Saylorville Lake West	5
Water Works Park	5
WDSM Private locations	1
WDSM Southwoods Park	2

Effort summary

Total number of hunting trips in DMZ

[1] 926

Total hours hunted in DMZ

[1] 3035.3

Average hours hunted per hunting trip in DMZ

[1] 3.28

Table 2. Total number of trips, hours hunted, and average hours per hunting trip by location

Location	# of trips	# of hours	Avg. hours per trip
Ashworth Park (DSM)	33	76	2.30
Case Lake/Soccer (DSM)	23	84	3.63
Clive	74	235	3.18
Des Moines Private East Area	23	76	3.28
Des Moines Private MacRae Area	9	30	3.33
Des Moines Private Prospect Beaverdale Area	21	64	3.07
Des Moines Private South of Grand	94	214	2.27
Des Moines Private South West	14	108	7.71
Des Moines Private Southeast Area	4	14	3.62
Ewing Park (DSM)	61	336	5.52
MacRae Park (DSM)	16	50	3.09
Maffitt Reservoir	38	114	3.00
Pleasant Hill Private	19	66	3.47
Pleasant Hill Public	8	22	2.75
Polk County Brown's Woods	35	138	3.96

Location	# of trips	# of hours	Avg. hours per trip
Polk County Jester Park	24	70	2.92
Polk County Mally's Park	3	10	3.50
Polk County Sycamore Bike Trail	27	120	4.44
Polk County Yellow Banks Park	17	50	2.94
Urbandale Living History Farms	23	63	2.74
Urbandale Private	83	223	2.72
Urbandale Public	23	62	2.71
USACE Saylorville Lake East	104	316	3.03
USACE Saylorville Lake South	64	228	3.55
USACE Saylorville Lake West	29	82	2.81
Water Works Park	44	150	3.42
WDSM Private locations	5	15	3.00
WDSM Southwoods Park	8	20	2.44

Summary of deer observations

Table 3. Total deer observations by site

“Unknown deer” are deer for which sex was not determined by the observer

Location	Total Deer	Antlered Deer	Antlerless Deer	Unknown Deer	Proportion Antlerless
Ashworth Park (DSM)	46	28	17	1	0.37
Case Lake/Soccer (DSM)	211	62	149	0	0.71
Clive	205	84	115	6	0.56
Des Moines Private East Area	127	21	22	84	0.17
Des Moines Private MacRae Area	36	1	35	0	0.97
Des Moines Private Prospect Beaverdale Area	71	27	43	1	0.61
Des Moines Private South of Grand	128	53	65	10	0.51
Des Moines Private South West	21	20	1	0	0.05
Des Moines Private Southeast Area	46	8	38	0	0.83

Location	Total Deer	Antlered Deer	Antlerless Deer	Unknown Deer	Proportion Antlerless
Ewing Park (DSM)	137	92	41	4	0.30
MacRae Park (DSM)	27	13	12	2	0.44
Maffitt Reservoir	50	22	25	3	0.50
Pleasant Hill Private	71	32	36	3	0.51
Pleasant Hill Public	8	5	3	0	0.38
Polk County Brown's Woods	155	76	69	10	0.45
Polk County Jester Park	61	18	29	14	0.48
Polk County Mally's Park	2	1	0	1	0.00
Polk County Sycamore Bike Trail	69	13	52	4	0.75
Polk County Yellow Banks Park	30	17	13	0	0.43
Urbandale Living History Farms	84	40	44	0	0.52
Urbandale Private	231	61	169	1	0.73
Urbandale Public	39	12	24	3	0.62
USACE Saylorville Lake East	406	155	219	32	0.54
USACE Saylorville Lake South	171	61	93	17	0.54
USACE Saylorville Lake West	80	21	57	2	0.71
Water Works Park	220	84	130	6	0.59
WDSM Private locations	26	11	9	6	0.35
WDSM Southwoods Park	15	9	6	0	0.40

Table 4. Deer observations per hours hunted by site

Location	Hours Hunted	Total Deer/Hour	Antlered/Hour	Antlerless/Hour
Ashworth Park (DSM)	76	0.61	0.37	0.22
Case Lake/Soccer (DSM)	84	2.53	0.74	1.78
Clive	235	0.87	0.36	0.49
Des Moines Private East Area	76	1.68	0.28	0.29
Des Moines Private MacRae Area	30	1.20	0.03	1.17
Des Moines Private Prospect Beaverdale Area	64	1.10	0.42	0.67
Des Moines Private South of Grand	214	0.60	0.25	0.30
Des Moines Private South West	108	0.19	0.19	0.01
Des Moines Private Southeast Area	14	3.17	0.55	2.62
Ewing Park (DSM)	336	0.41	0.27	0.12
MacRae Park (DSM)	50	0.55	0.26	0.24
Maffitt Reservoir	114	0.44	0.19	0.22
Pleasant Hill Private	66	1.08	0.48	0.55
Pleasant Hill Public	22	0.36	0.23	0.14
Polk County Brown's Woods	138	1.12	0.55	0.50
Polk County Jester Park	70	0.87	0.26	0.41
Polk County Mally's Park	10	0.19	0.10	0.00
Polk County Sycamore Bike Trail	120	0.58	0.11	0.43
Polk County Yellow Banks Park	50	0.60	0.34	0.26
Urbandale Living History Farms	63	1.33	0.63	0.70
Urbandale Private	223	1.04	0.27	0.76
Urbandale Public	62	0.63	0.19	0.39
USACE Saylorville Lake East	316	1.29	0.49	0.69
USACE Saylorville Lake South	228	0.75	0.27	0.41

Location	Hours Hunted	Total Deer/Hour	Antlered/Hour	Antlerless/Hour
USACE Saylorville Lake West	82	0.98	0.26	0.70
Water Works Park	150	1.46	0.56	0.86
WDSM Private locations	15	1.73	0.73	0.60
WDSM Southwoods Park	20	0.77	0.46	0.31

Summary of furbearer observations

Table 5. Total observations of each furbearer species by site

Location	BOBCAT	COYOTE	RED.FOX	GRAY.FOX	RACCOON	OPOSSUM	SKUNK	BADGER	CAT	OTTER
Ashworth Park (DSM)	1	1	2	0	11	0	0	0	0	0
Case Lake/Soccer (DSM)	0	11	0	0	0	0	0	0	0	0
Clive	1	4	1	0	2	5	0	0	0	0
Des Moines Private East Area	0	6	0	0	12	0	0	0	3	0
Des Moines Private MacRae Area	0	0	1	0	0	0	0	0	0	0
Des Moines Private Prospect Beaverville Area	2	2	3	0	9	3	0	0	10	0
Des Moines Private South of Grand	0	3	19	0	11	5	0	0	7	0
Des Moines Private South West	0	3	0	0	1	0	0	0	10	0
Des Moines Private Southeast Area	0	3	0	0	0	0	0	0	0	0
Ewing Park (DSM)	1	18	1	0	26	13	0	1	17	0
MacRae Park (DSM)	0	1	0	0	0	0	0	0	0	0
Maffitt Reservoir	1	4	0	0	15	0	0	0	0	0
Pleasant Hill Private	2	1	0	0	1	2	0	0	0	0
Pleasant Hill Public	0	3	3	0	1	0	0	0	2	0

Location	BOBCAT	COYOTE	RED.FOX	GRAY.FOX	RACCOON	OPOSSUM	SKUNK	BADGER	CAT	OTTER
Polk County Brown's Woods	0	2	0	0	15	10	0	0	1	0
Polk County Jester Park	0	2	3	0	29	4	1	0	0	0
Polk County Mally's Park	1	3	0	0	0	0	0	0	0	0
Polk County Sycamore Bike Trail	0	2	0	0	0	4	0	0	2	0
Polk County Yellow Banks Park	0	0	0	0	0	2	0	0	0	0
Urbandale Living History Farms	3	7	0	0	4	0	0	0	0	0
Urbandale Private	2	2	2	0	24	0	0	0	3	0
Urbandale Public	0	0	4	0	7	2	0	0	2	0
USACE Saylorville Lake East	0	15	1	0	31	4	0	0	7	0
USACE Saylorville Lake South	0	7	0	0	20	12	0	0	1	0
USACE Saylorville Lake West	0	2	0	0	8	0	0	0	0	0
Water Works Park	4	2	1	0	4	1	0	0	0	0
WDSM Private locations	0	0	0	0	0	3	0	0	0	0
WDSM Southwoods Park	0	3	0	0	1	0	0	0	0	0

Trends

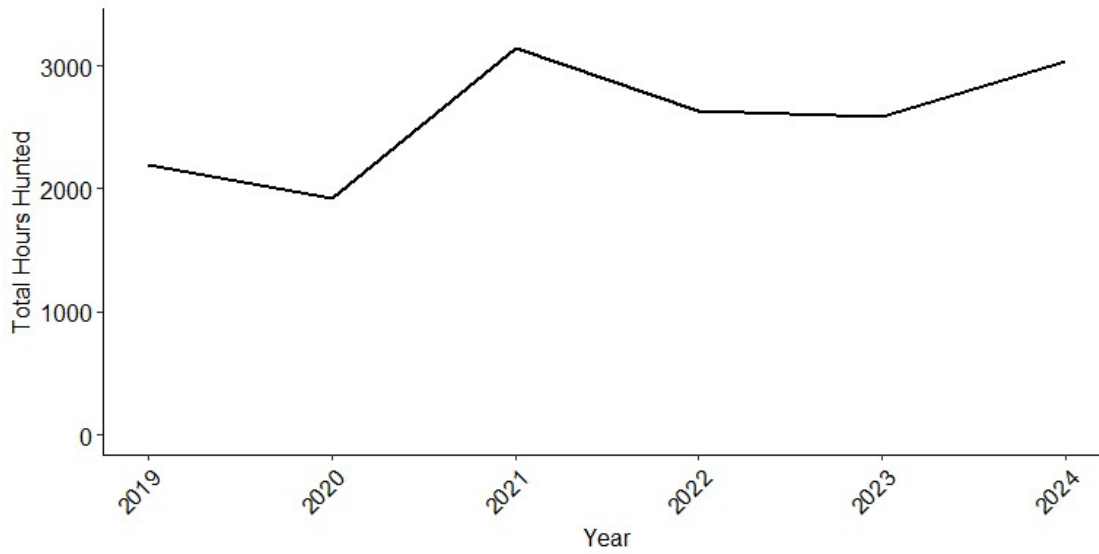


Figure 1. Trend in total hours hunted in the Polk DMZ

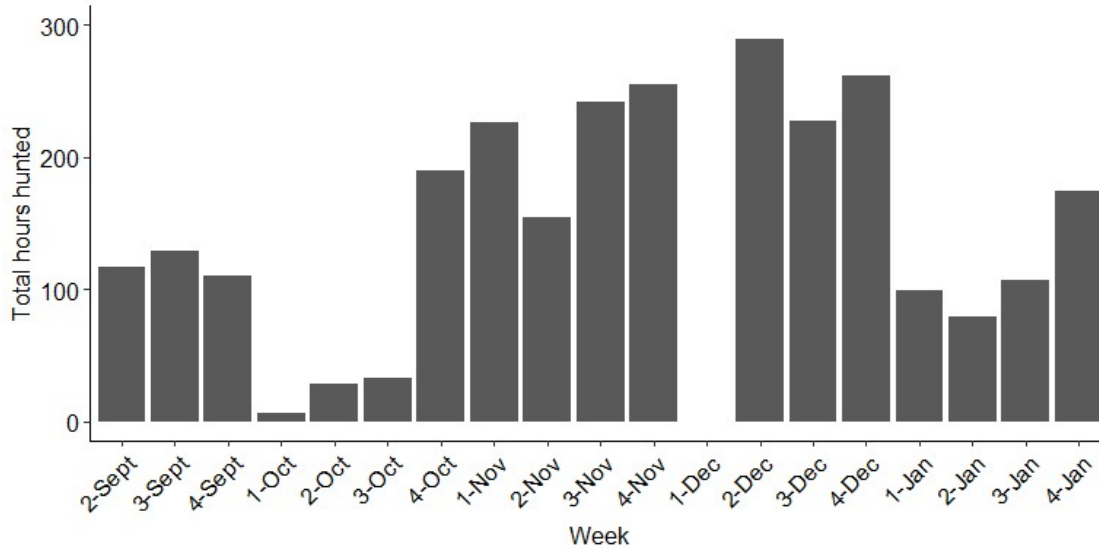


Figure 2. Total hours hunted by week of each month

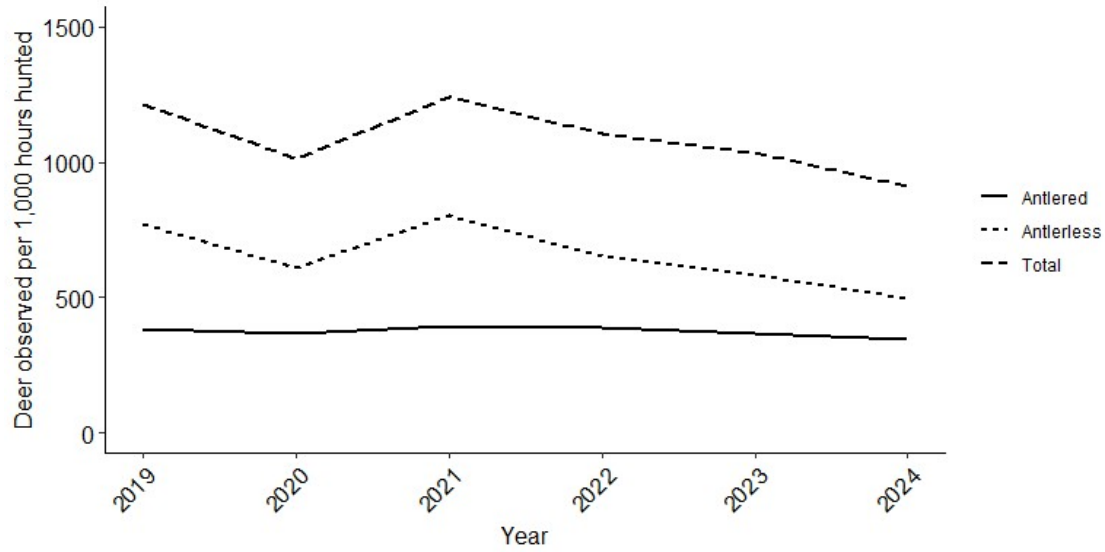


Figure 3. Trends in deer observations in the Polk DMZ

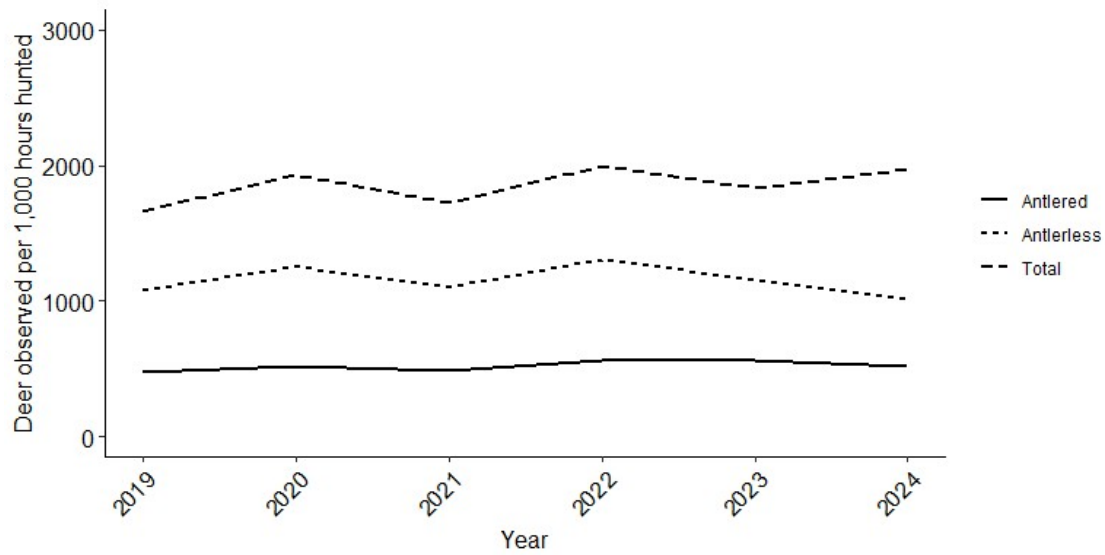


Figure 4. Trends in deer observations in the Central Region

The Central Region includes Webster, Hamilton, Hardin, Boone, Story, Marshall, Dallas, Polk, and Jasper counties

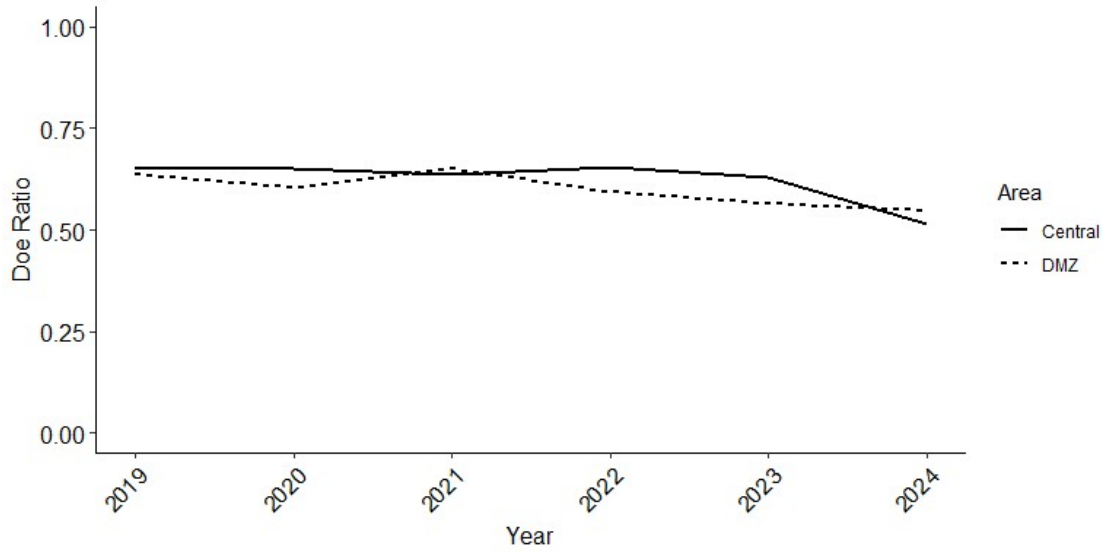


Figure 5. Trends in antlerless deer ratio in the Polk DMZ compared to the Central Region

The Central Region includes Webster, Hamilton, Hardin, Boone, Story, Marshall, Dallas, Polk, and Jasper counties

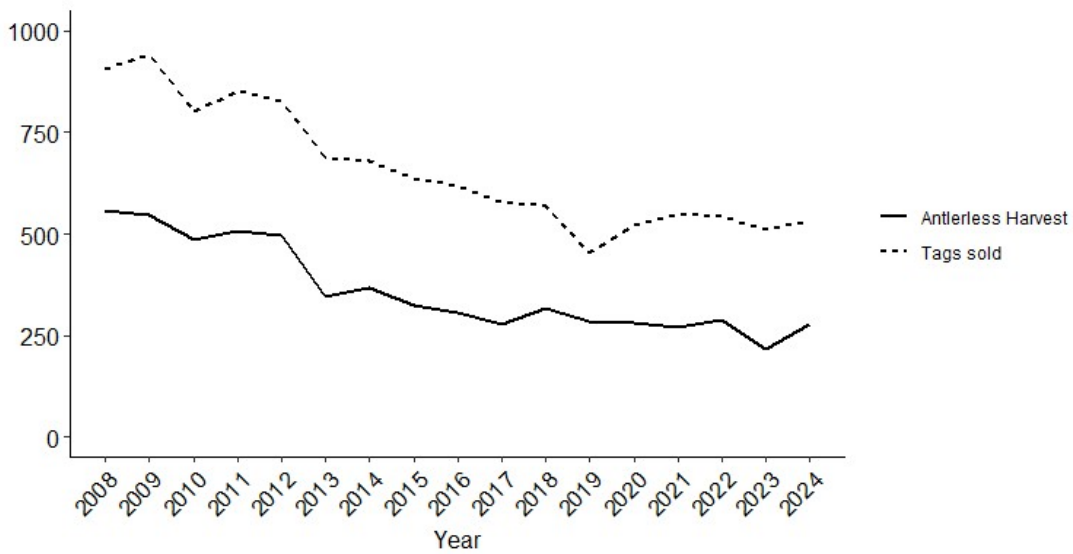


Figure 6. Trends in total antlerless deer harvest and licenses (tags) sold in the Polk DMZ

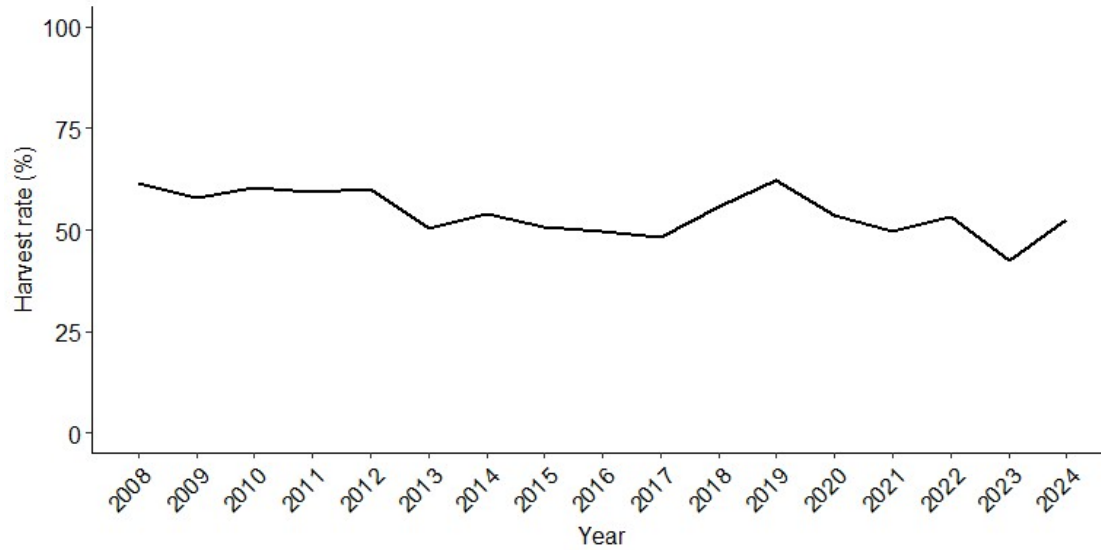


Figure 7. Trend in harvest rate (proportion of sold tags that resulted in a harvest) in the Polk DMZ

Table 6. Results from the helicopter deer surveys in Polk county, 2003 to present.

Urban Areas Surveyed	2003	2004	2005	2006	2007	2008	2009	2010	2011	2012	2013	2014	2018	2019	2021	2025
Water Works Park Area	102	134	130	37	58	63	51	46	35	21	35	46	91	101	33	20
D.M. South of Grand	36	63	56	18	53	66	49	55	28	28	29	18	41	60	8	12
Browns & Walnut Woods	155	226	167	137	301	216	232	151	189	182	238	165	153	159	57	38
Easter Lake & DSM River East	132	146	239	84	418	233	209	254	195	142	174	112	127	93	94	51
Yellow Banks & DSM River	98	77	78	29	110	92	77	61	33	19	51	44	40	30	10	23
Four Mile Creek:																
I80 -Des Moines River	87	100	107	118	174	165	179	164	87	113	114	91	50	47	27	55
Pleasant Hill west*				48	71	59	86	63	53	43	70	71	63	128	16	29
Pleasant Hill east				25	31	150	162	128	90	71	138	123	126		94	107
North of I-80	80	104	127	16	124	202	136	177	125	71	98	167	176	118	113	136
Margo Frankel Woods	0	28	15	8	15	15	17	25	18	21	14	12	2	7	10	4
Rock Creek	39	44	27	52	66	92	58	47	41	46	34	33	38	23	23	43
Des Moines River:																
Saylorville Dam-Riverview Park	209	296	184	153	278	238	143	155	150	123	193	148	200	170	110	71
North of I-80*						175	122	124	111	82	118	97	138	106	68	34
South of I-80*						63	21	31	39	41	75	51	62	64	42	37
Jordan Creek/South Woods		63	56	38	10	25	35	30	33	15	17	14	18	18	14	3
Quail Park- W. DSM											101	92		35		34
Walnut Creek:																
Raccoon River to I-80	25	42	19	30	50	19	40	40	27	22	13	11	33	11	11	5
Clive Area; west of I-35*						23	15	10	5	8	6	4	3	9	4	4
Living History Farms	16	34	26	30	25	43	23	17	24	18	22	29	14	51	16	17
West of I-80	203	336	177	227	340	172	147	186	170	127	154	111	152	103	68	38
Beaver Creek (Johnston)																
Polk City Barrier Dam Refuge	135	230	135	89	198	150	166	268	142	118	99	81	114	87	117	27
Total	1,317	1923	1543	1091	2251	2041	1798	1884	1448	1164	1604	1369	1446	1190	829	719
Rural Areas																
Saylorville Reservoir																
Camp Dodge	68	195	165	148	234	148	109	93	107	49	91	101	64	82	43	32
Dam to MLB (west side)	50	109	46	67	98	114	86	136	84	115	94	36	20	36	43	18
Dam to MLB (east side) <i>a</i>	50	137	94	55	66	127	91	90	105	110	67	67	97	83	34	67
MLB to Hwy 17 (east side)	-		142	123	124	208	134	178	179	201	225	184	126	57	25	51
Jester Park, MLB to Bridge to Hwy	108	189	82	110	133	221	165	187	201	238	132	133	118	56	43	79
Total (excluding Barrier Dam Refug)	276	630	529	503	655	818	585	684	676	713	609	521	425	314	188	247

